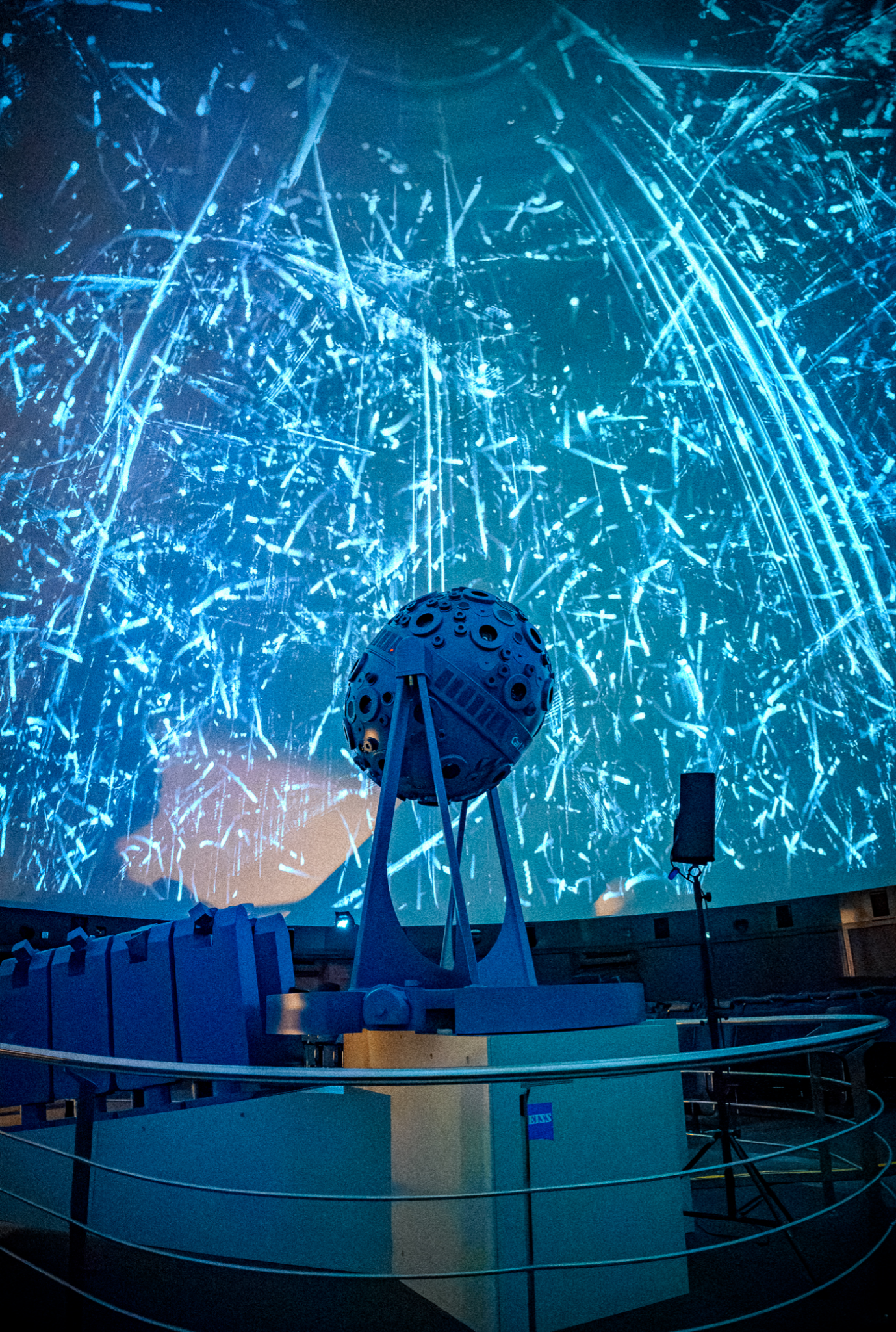




fulldomefestival
UNFRAME IT
MAY 15-18 2025

GUIDELINES LIVESHOW
19. FullDome Festival 2025
Zeiss-Planetarium Jena / Germany



Festival Dates

May 15.–18.2025

Submission Guidelines for Live Visuals, Live Performances, Spatial Audio Shows, and Live Shows for the Fulldome Festival at the Zeiss Planetarium Jena

The **Fulldome Festival at the Zeiss Planetarium Jena** invites artists from around the world to submit their innovative Live Visuals, Live Performances, Spatial Audio Shows, and Live Shows. This document outlines the key information and submission requirements for participation in this unique event.



1. Festival Objectives

The Fulldome Festival is an interdisciplinary event focused on the fusion of art, technology, science and entertainment. It serves as a platform for creative, immersive experiences in the fulldome environment—a 360-degree dome space specifically designed for audiovisual presentations. The shows may include visual, acoustic, and performative elements and aim to captivate the audience in a multisensory world.

2. Submission Categories

Artists can submit works in the following categories:

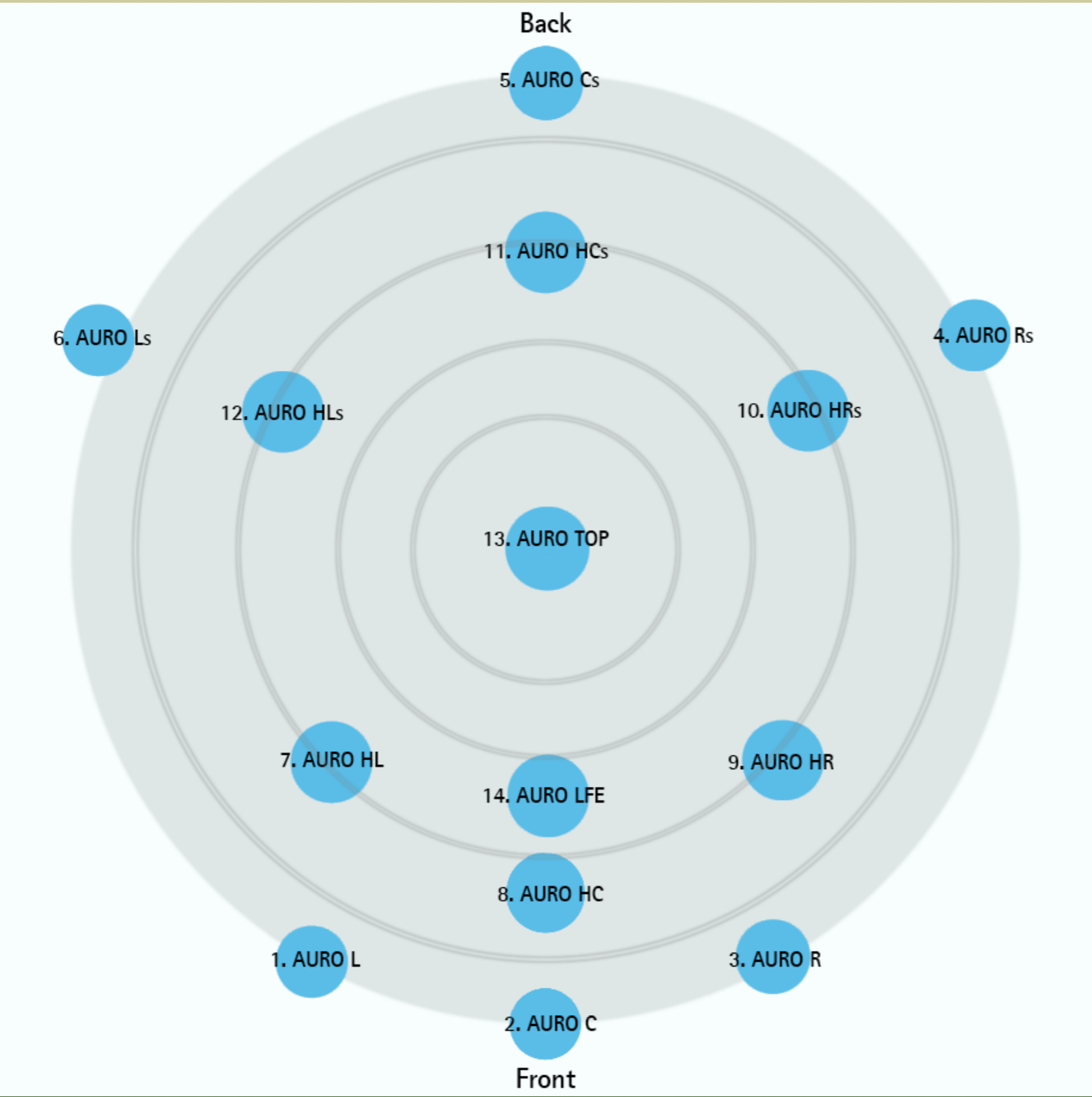
- **Live Visuals:** Real-time generated visuals projected onto the dome during the performance. These may include VJing, generative art, and digital visualization.
- **Live Performances:** Musical or interactive performances combined with visual elements, presented on the dome.
- **Spatial Audio Shows:** Immersive audio productions designed for a 3D spatial audio experience. These shows can be submitted with or without accompanying visuals.
- **Live Shows:** Multidisciplinary performances integrating live music, theater, dance, or other artistic elements in the fulldome environment.

3. Participation Requirements

- **Artistic Criteria:** All submissions must be innovative, creative, and technically feasible. Works should exploit the immersive nature of the fulldome format to engage the audience and explore new aesthetic and technological possibilities.

Technical Requirements

- **Resolution:** Projections can be integrated into the dome via a live computer system. Mapping is pre-installed. Live visuals must be compatible with 3K (3072x3072/30 fps) or 2K (2048x2048/60 fps) resolution. Pre-produced videos can be submitted in 4K (4096x4096/30-60 fps).
- **File Formats:** Submissions must be in common formats such as mp4/H265/60 CBR, DXV, or other compatible formats. Audio files should be submitted in WAV or customized Live formats.
- **Technical Infrastructure:** All technical requirements of submitted works must be verified and confirmed to ensure compatibility before approval.



Speaker Setup Planetary

4. Submission Process

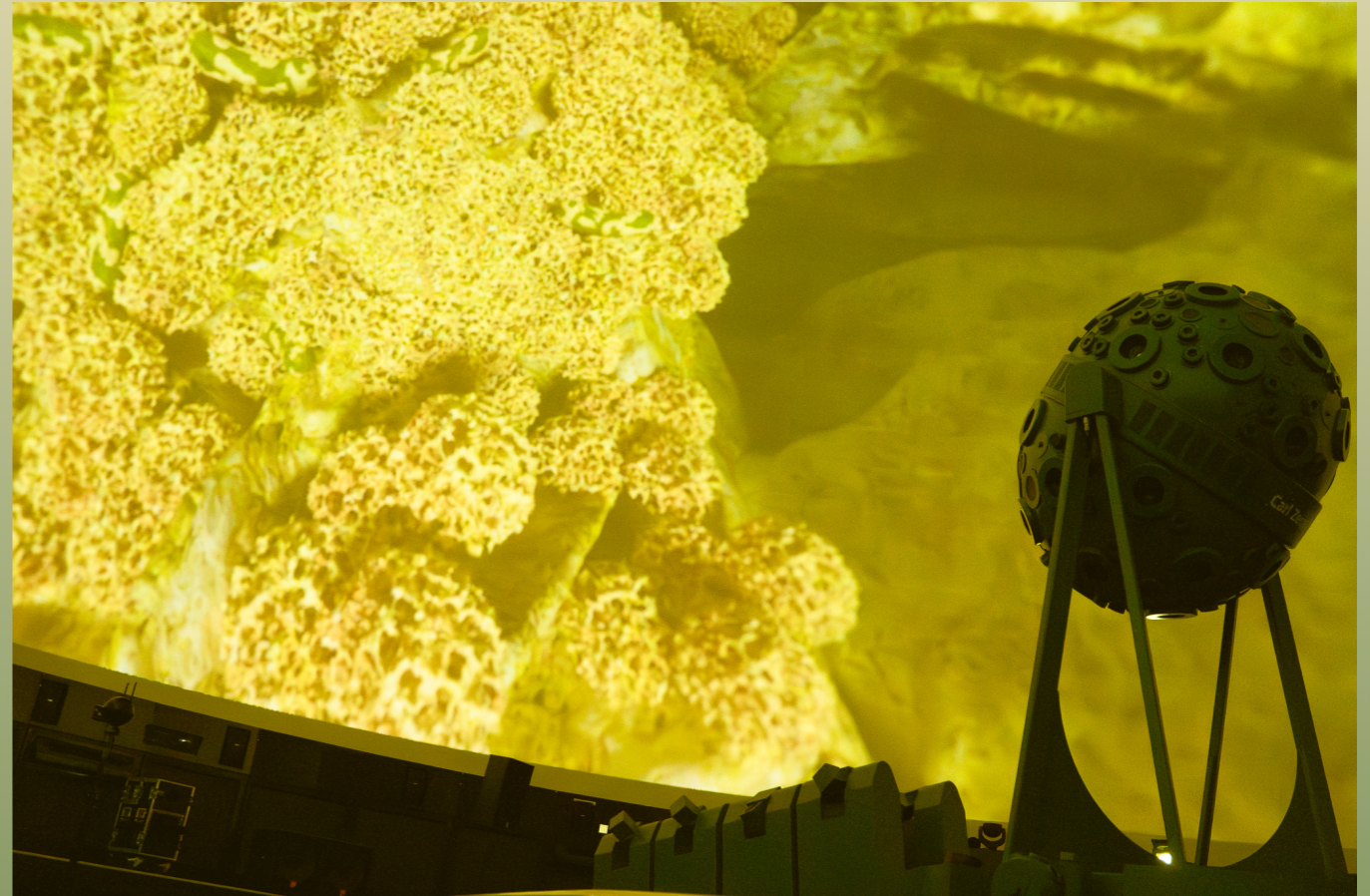
The submission process involves several steps:

1. **Online Application:** The first step is to register and submit via the online portal on the festival website or directly via this link.



Basic information about the project, the artists, and a brief description of the show must be submitted.

2. **Technical Details:** Submit detailed technical information including the required format, resolution, audio format, and software or hardware used.
3. **Demo Material:** Submissions should include a short demo (3-5 minutes) showcasing key visual and/or audio aspects of the performance. This can be submitted as a video, audio file, or a link to an online demo.
4. **Additional Information:** It is recommended to include additional materials such as a creative concept, a short biography of the artists, and, if applicable, a technical sketch or a setlist of the performance.
5. **Submission Deadline:** All submissions must be received by **January 15, 2025** via the online portal. Late submissions are unlikely to be considered for the Fulldome Festival 2025, although artists will be added to our artist roster.



5. Selection Process

A team of curators and technicians from the Fulldome Festival will evaluate all submitted works. The criteria for selection include:

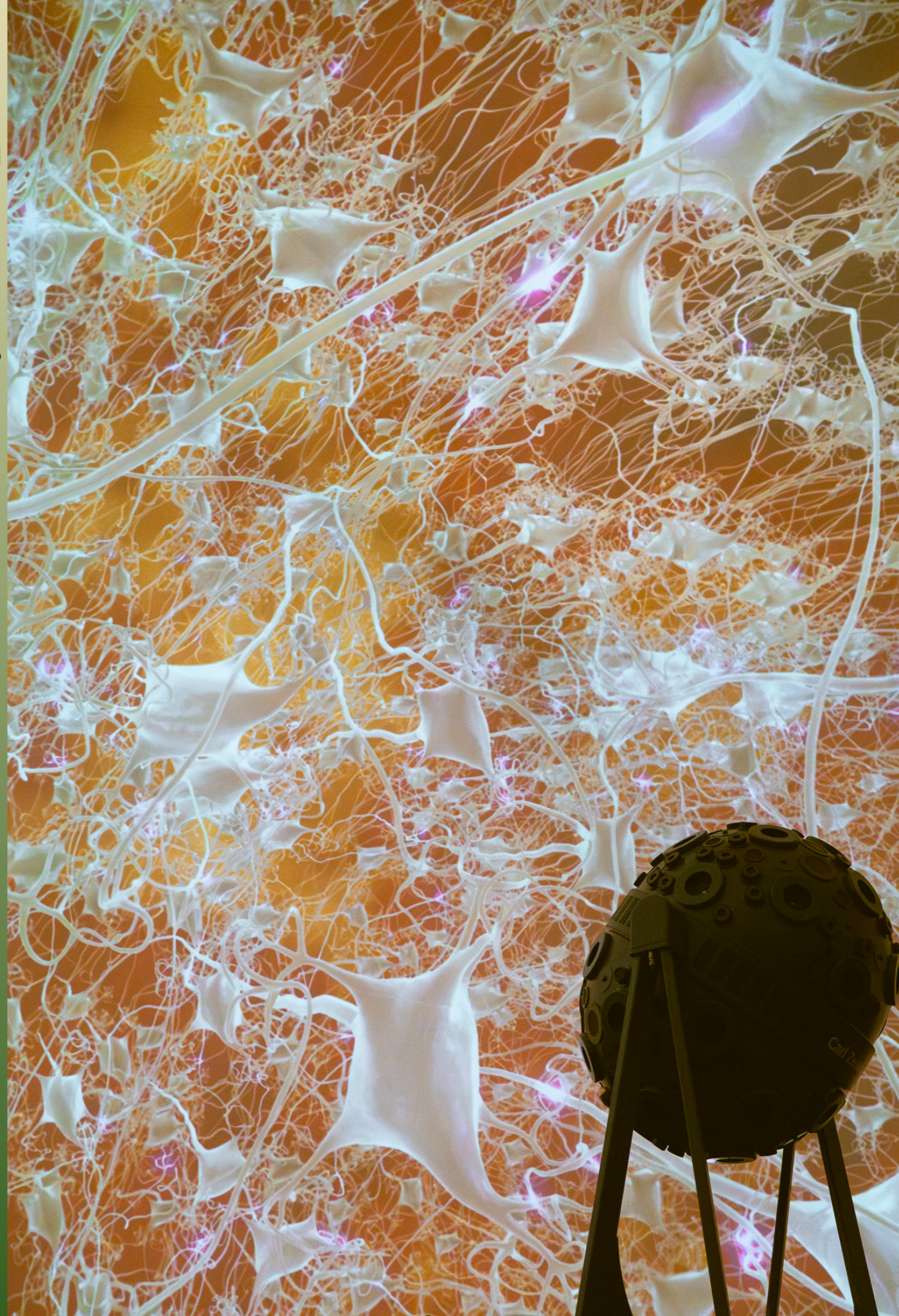
- **Creativity and Innovation:** How original is the concept? How is the fulldome format used to create a unique experience?
- **Technical Feasibility:** Can the work be technically realized? Does it meet the technical requirements of the planetarium?
- **Audience Experience:** How is the audience engaged in the performance? Is the work immersive and captivating?

Selected works will be notified, and further details regarding technical preparation and performance schedules will be coordinated with the artists.

Please note that all submissions will be subject to a curation process that will take into account the quality of the show and the available time in the festival program.

6. Festival Dates and Venue

The **Fulldome Festival** at the **Zeiss Planetarium Jena** will take place from **May 15-18, 2025**. Additional details on the schedule, venues, and available resources will be provided to selected artists after the selection announcement.



Competition Rules and Conditions

The FullDome Festival is open to producers and artist`s worldwide. Both commercial and non-commercial productions can be admitted.

The video content must have been originally produced in fulldome format.

Multiple entries are allowed.

We actively encourage producers to attend the festival and be available for Q&A with the audience. Whenever possible, screenings of Fulldome shows will be followed by a short introduction of the artist/producer, highlighting the specific qualities of the show and how it contributes to the fulldome medium at large.

Copyright

The festival participants confirm that they are owners of all rights of use and distribution of their contributions (including visuals and sound) and that no copyrights and no third-party rights are infringed. By entering their contributions, the festival participants authorize the Fulldome Festival Foundation to give permissions to present the festival reel as stipulated in clause „acceptance of competition rules“ and to advertise the FullDome Festival.

Promotion

The festival participants permit the Fulldome Festival Foundation to use stills and produce trailers (including visuals and sound) to be used on the Internet, for projection mappings and in print and other media to advertise the FullDome Festival and the festival reel.



Liability and Insurance

The festival does not accept liability for damage to submitted materials or equipment during the event. It is recommended that all materials be adequately insured prior to the event.

Credits

The Fulldome Festival Foundation guarantees to name the respective copyright owners when presenting their contributions or to indicate them completely in the closing credits.

Licensing and Permissions

If using music, sound effects, or other copyrighted material, the necessary licenses and permissions must be obtained. Submitters are required to provide proof of these rights.

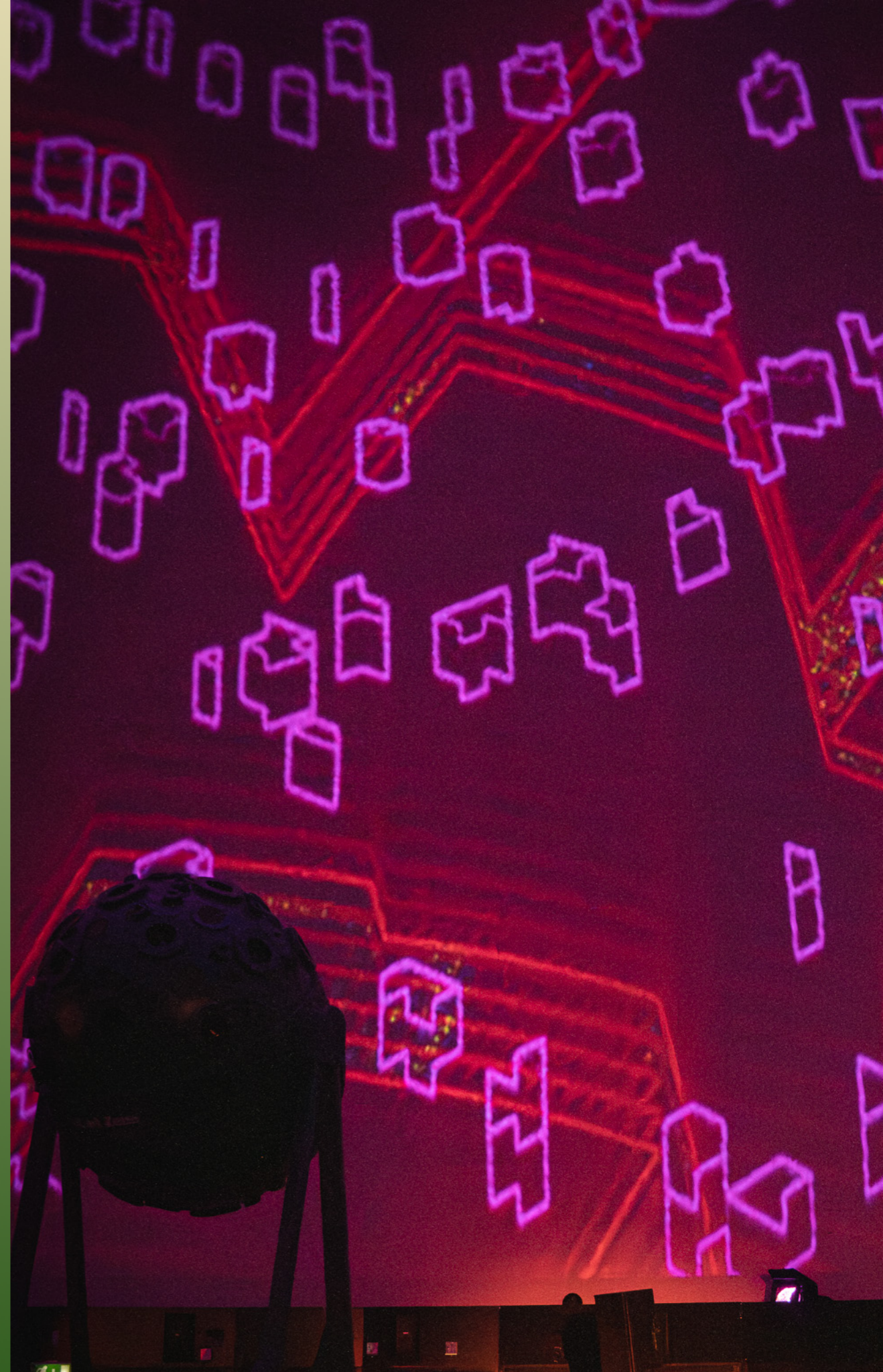
Rights & Liability

Participants confirm that they hold the rights to their submissions and that no third-party rights are infringed.

The festival assumes no liability for damage to submitted materials or data.

If general terms and conditions have not become part of the contract in whole or in part or are ineffective, the rest of the contract shall remain effective.

Please note that submitting your entry does not guarantee a spot in the program. The festival has a tight schedule, and we want to make sure that all accepted submissions get a good spot and the attention they deserve in the curated program. If your submission does not make it into the 2025 program, we encourage you to try again in 2026.





Praise the dome

Contact Information

For questions or further information, please contact:

Robert Metzner (Fulldome Festival Director)

Email: r.metzner@fulldome-festival.de

Website: www.fulldome-festival.de

Fulldome Festival Foundation
October 21, 2024